



How to Take Care Your Silicone Prosthesis

- Keep the silicone prosthesis away from fire, solvents and oil-based liquid; DO NOT soak prosthesis with any type of solvent;



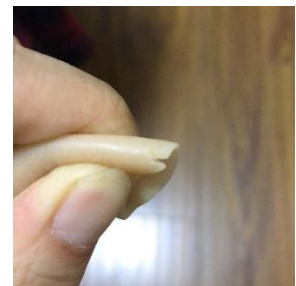
- Avoid using sharp objects such as knives or scissors as these could cut and tear the prosthesis easily.



- Do NOT expose the prosthesis to sunlight for extended periods, this could cause the color to fade.



- If a small split happens at the edge of the prosthesis, please return the prosthesis to your prosthetists for removing the split. Otherwise, the small split will continue to grow and break the whole prosthesis.



- DO NOT use excessive force to pull residual fingers from the silicone prosthesis, this may tear the prosthesis.



The prosthesis may create a vacuum between the residual limb and the prosthesis inner surface, in this case, simply pinch the prosthesis and make an air passage to eliminate vacuum before removing the prosthesis.



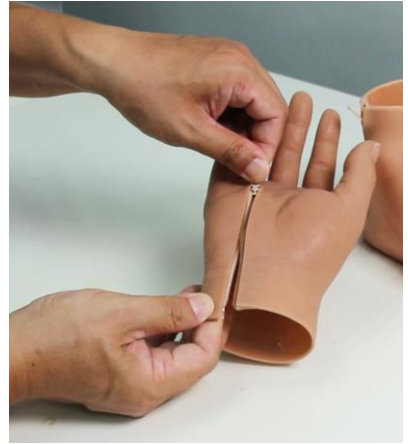
- Remove stains immediately with mild soap and water. Stains may become permanent if not cleaned immediately, our warranty does not cover such incidents;
- For hygiene purposes, we recommend to cleaning your prosthesis daily with mild soap and water;



- Make use of small items such as bandages, rings, bracelets, sports wrist band or watches to camouflage the prosthesis edge;



- When using a silicone prosthesis with zipper, please ensure the zipper is FULLY opened before donning and doffing. If the zipper is not fully opened while donning or doffing the zipper can be damaged easily;



- Clean the zipper everyday with water and soft toothbrush, gently brush the zip teeth and remove the dirt;



- For models that integrated finger wires, hinges, or wrist connectors:
DO NOT apply force such as using the prosthesis to support or to lift the body or carry any object.
Do keep the silicone prosthesis away from fire, solvents and oil-based liquid;
DO NOT soak prosthesis with any type of solvent; doing so will damage the finger wires or hinges and injury may result from broken finger wires or hinges caused by misuse.
DO NOT use our finger prosthesis to type or carry object. Our silicone prostheses are designed for cosmetic purposes only;



- For all models, DO NOT take the inner filling out of the prosthesis as this will void the warranty.

